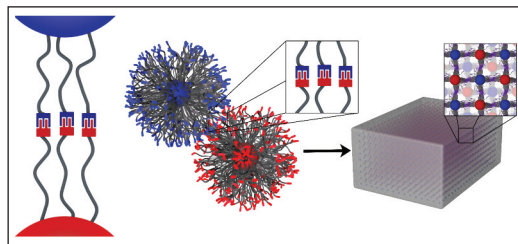
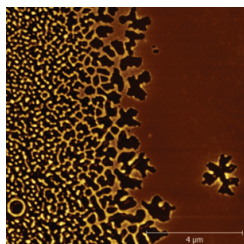
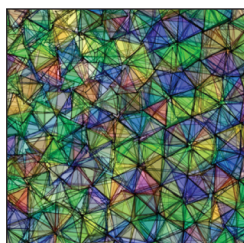
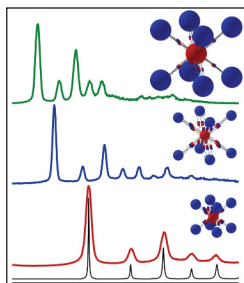
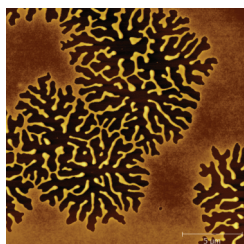
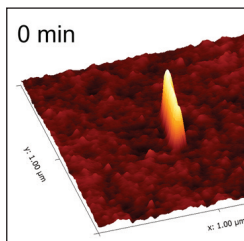


# complex fluids



## 70th New England Complex Fluids Workshop

**Friday, March 24, 2017**

Mason Laboratory  
9 Hillhouse Avenue  
Yale University  
New Haven, Connecticut

**8:45 am – 5 pm**

### Agenda

8:45–9:25am *Breakfast and Registration, Welcome Lobby*

### Morning Presentations

9:30–10:05am Andrej Kosmrlj, Princeton University  
**Statistical Mechanics of Microscopically Thin Thermalized Structures**

10:05–10:40am Maria Santore, UMass–Amherst  
**Near Surface Particle and Bacteria Motion Signatures in Flow**

10:40–11:00am *Coffee I, Welcome Lobby*

11:00–12:00pm **Sound Bites Session I: Auditorium**

12:00–1:15pm *Lunch: Welcome Lobby & Mason Lab 107*

### Afternoon Presentations

1:15–1:50pm Robert MacFarlane, MIT  
**Polymer- and DNA-Directed Assembly of Nanocomposites**

1:50–2:25pm Nicolas Giovambattista, CUNY  
**Understanding the Complex Behavior of Liquid and Glassy Water Using the Potential Energy Landscape Approach**

2:30–3:30pm **Sound Bites Session II: Auditorium**

3:30–4:00pm *Coffee II: Welcome Lobby*

4:00–4:35pm Zahra Fakhraei, UPenn  
**Measuring Long-range Correlated Dynamics in Organic Glasses**

**Website** [www.complexfluids.org](http://www.complexfluids.org)

**Registration deadline** **March 22, 2017**

### Sponsors

Center for Research on Interface Structures  
and Phenomena (NSF MRSEC)  
Dept. of Chemical & Environmental Engineering  
Dept. of Mechanical Engineering & Materials Science  
School of Engineering & Applied Science  
Raymond and Beverly Sackler Institute for Biological,  
Physical and Engineering Sciences



**crisp** Center for Research on  
Interface Structures  
and Phenomena

# 70th New England Complex Fluids Workshop

Friday, March 24, 2017 • Yale University

## Parking

Parking is provided free of charge to all participants at Science Hill parking garage, 200 Prospect Street (behind Ingalls Rink).

Guests must use PIN pad number **958#** (including the pound sign) to enter and exit the parking lot. Limited street parking (metered) is available on Hillhouse Avenue and other surrounding streets.

## Directions to Yale Campus and Science Hill parking garage

*From I-95:*

- Take exit to **I-91** and follow directions below.

*From I-91:*

- Use **Exit #3** from I-91 and follow exit ramp.
- Proceed through traffic light at end of exit ramp onto **Trumbull Street**.
- At next traffic light, turn right onto **Whitney Avenue**.
- Travel north on Whitney Ave. to the **first** traffic light.
- Turn left onto Sachem Street.
- Turn right onto Prospect Street. Travel past Ingalls Rink on your left.
- The entrance to the **Science Hill parking garage** will be on your left.

## Directions to Mason Laboratory

The workshop will be held in **Mason Laboratory** at 9 Hillhouse Avenue. It will take 10 minutes to walk from the parking garage.

- Walk south on Prospect Street. Turn left onto Sachem Street.
- Turn right onto Hillhouse Ave.
- Mason Laboratory will be on your left on Hillhouse after crossing Trumbull Street.

